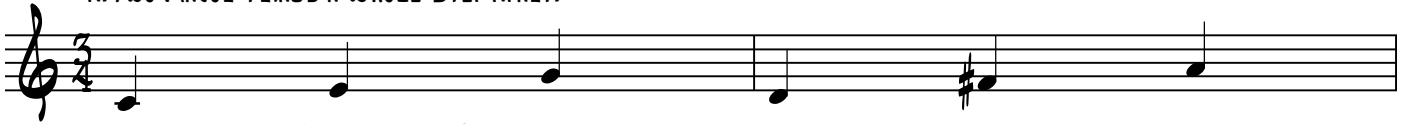


# TRIAD PAIRS

A. TWO MAJOR TRIADS A WHOLE STEP APART.



- USABLE OVER:
1. ALL MODES OF G MAJOR
  2. ALL MODES OF A MELODIC MINOR
  3. ALL MODES OF G MELODIC MINOR

B. TWO MINOR TRIADS A WHOLE STEP APART



- USABLE OVER:
1. ALL MODES OF Bb MAJOR
  2. ALL MODES OF C MELODIC MINOR

EXAMPLE:

